



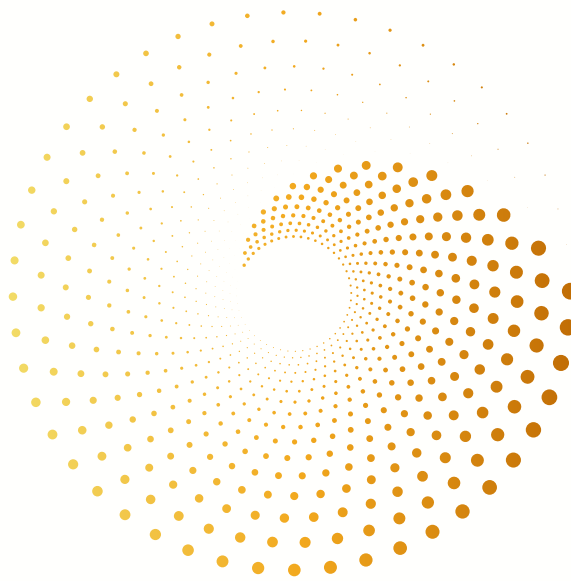
# Mark Benevolent Fund

# Please Note

Applications for assistance from the Craft (via the M.C.F.) or from other local Mark or Craft Charities should be treated separately and made in addition to your application to the M.B.F.



## Mark Benevolent Fund



Click on the icons below to follow us on social media



86 St James's Street | London SW1A 1PL

+ 44 (0)20 7839 5274

[markmasonshall.org](http://markmasonshall.org)



Your Charity

Your Money

Your Generosity

Your Family



The following are examples of what help we can offer.

It is not a definitive list and each case will be considered entirely on its own merits:

- ☉ Daily living costs when caused by a change of circumstances, although in most cases we would prefer to help with specific or unexpected capital expenditure
- ☉ Household repairs or replacements, including boilers and white goods, required for a dignified standard of living and acceptable quality of life
- ☉ Household arrears (utilities, mortgage, Council tax etc.) when caused by a change of circumstances
- ☉ Transport requirements for hospital visits relating to a chronic or ongoing medical condition
- ☉ Mobility aids and equipment required to improve daily quality of life
- ☉ Respite care to give much needed breaks for carers



“ We are Here for you! ”

General exceptions may apply when the claimant is considered to have sufficient capital savings to pay for the required need themselves, although each case will be considered individually and entirely on its merits.

## Who should you approach to start the process?

If you think the Mark Benevolent Fund may be able to help, first speak to your Lodge Almoner, or directly to the Mark Provincial Grand Almoner if you prefer, who will be able to advise you accordingly. If the Provincial Grand Almoner considers that your circumstances qualify for submission to the M.B.F. he will discuss it with you, document all the information required, and make the submission on your behalf. All information will be treated with complete confidentiality.

